

Test Report

Report No.: ZRC2210045XY-ROHS-R1

Date: Oct. 19, 2022

Page 1 of 12

Applicant : Dongguan Poleejiek Electric Bicycle Co., Ltd
Address: Building A, Lifeng Building, Hengjiangxia Industrial 3rd Road, Changping Town
Dongguan City
Manufacturer: Dongguan Poleejiek Electric Bicycle Co., Ltd
Address: Building A, Lifeng Building, Hengjiangxia Industrial 3rd Road, Changping Town
Dongguan City

The following sample(s) was (were) submitted and identified by client as:

Sample Description : Electric bicycle
Trademark : BAOLUJIE & GERPSI
Model No. : BLJ-DZ2001, BLJ-DZ2005, BLJ-DZ-2017, DP-2609, DP-2601, DZ-2003, DP-2610, DZ-2020, DZ-2028, DZ-2026, DS-2606, DS-2607, DP-2608, DP-2614, DZ-2027, DZ-2005, DZ-2021, DZ-2029, DZ-2012, DZ-2603, DP-2610, DZ-2008, DP-2609, DP-2615, DP-2616, DS-2608, DP-2003-1, DP-2003-2, BLJ2029, DZ-2001, DS-1201
Sample Received Date : Oct. 13, 2022
Testing Date : Oct. 13, 2022-Oct 19, 2022
Test Request : Please refer to next page(s).
Test Result(s) : Please refer to next page(s).

Signed for and on behalf of ZRC International Certification (Shenzhen) Co., Ltd

Prepared by



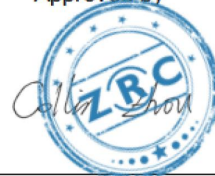
Sammy Lin
Engineer

Checked by



Emily Wang
Supervisor

Approved by



Collin Zhou
Manager

Test Report

Report No.: ZRC2210045XY-ROHS-R1

Date: Oct. 19, 2022

Page 2 of 12

Summary of test results:

TEST REQUEST

CONCLUSION

- (1) RoHS Directive 2011/65/EU and its subsequent amendments & Directive (EU) 2015/863
Lead (Pb), Cadmium(Cd), Mercury(Hg), Hexavalent Chromium(Cr(VI)),
Polybrominated Biphenyls (PBBs) and Polybrominated DiphenylEthers (PBDEs),
Phthalates (DBP, BBP, DEHP, DIBP)

PASS

Test Report

Report No.: ZRC2210045XY-ROHS-R1

Date: Oct. 19, 2022

Page 3 of 12

Test Material List

Material No.	Description
1	Silver plastic
2	Orange plastic reflector
3	Black metal
4	Green metal
5	Silver metal
6	Silver metal brake
7	Black plastic seat
7	Black plastic (pedal)
8	Orange plastic(pedal)
9	Black plastic tire
10	Black plastic tire air cap
11	Black plastic handle
12	Black plastic brake handle
13	Black plastic brake line
14	Black plastic (lamp housing)
15	Transparent plastic (lamp housing)
16	LED
17	Battery
18	Power charger

Test Result(s)

(1) Lead (Pb), Cadmium(Cd), Mercury(Hg), Hexavalent Chromium(Cr(VI)), Polybrominated Biphenyls (PBBs) and Polybrominated DiphenylEthers (PBDEs), Phthalates (DBP, BBP, DEHP, DIBP)

Lead (Pb), Cadmium(Cd), Mercury(Hg), Hexavalent Chromium(Cr(VI))

Test Method: With reference to IEC 62321-5: 2013, IEC62321-4: 2013+A1:2017, IEC 62321-7-1: 2015 or IEC 62321-7-2: 2017, was analyzed by Ultraviolet-visible Spectrometry (UV-Vis).

No.	EDXRF Result ⁽¹⁾					Chemical Result ⁽²⁾ (mg/kg)	Remark ⁽³⁾	Conclusion
	Pb	Cd	Hg	Cr	Br			
1	BL	BL	BL	BL	BL	--	--	Pass

Test Report

Report No.: ZRC2210045XY-ROHS-R1
Date: Oct. 19, 2022
Page 4 of 12

2	BL	BL	BL	BL	BL	--	--	Pass
3	BL	BL	BL	BL	NA	--	--	Pass
4	BL	BL	BL	BL	NA	--	--	Pass
5	BL	BL	BL	BL	NA	--	--	Pass
6	BL	BL	BL	BL	NA	--	--	Pass
7	BL	BL	BL	BL	BL	--	--	Pass
8	BL	BL	BL	BL	BL	--	--	Pass
9	BL	BL	BL	BL	BL	--	--	Pass
10	BL	BL	BL	BL	BL	--	--	Pass
11	BL	BL	BL	BL	BL	--	--	Pass
12	BL	BL	BL	BL	BL	--	--	Pass
13	BL	BL	BL	BL	BL	--	--	Pass
14	BL	BL	BL	BL	BL	--	--	Pass
15	BL	BL	BL	BL	BL	--	--	Pass
16	BL	BL	BL	BL	BL	--	--	Pass
17	BL	BL	BL	BL	BL	--	--	Pass
18	BL	BL	BL	BL	BL	--	--	Pass

Remark:

(1) ①Results are obtained by EDXRF for primary screening, and further wet chemical testing by ICP-OES (for Cd,Pb, Hg), UV-VIS (for Cr(VI)) and GC/MS (for PBBs, PBDEs) is recommended to be performed, if an inconclusive result was found (as "X" in below table) (unit: mg/kg).

③The EDXRF screening test for RoHS elements – The reading may be different to the actual content in the sample be of non-uniformity composition.

Element	Polymer	Metal	Composite Materials
Cd	$BL \leq (70-3\sigma) < X < (130+3\sigma) \leq OL$	$BL \leq (70-3\sigma) < X < (130+3\sigma) \leq OL$	$LOD < X < (150+3\sigma) \leq OL$
Pb	$L \leq (700-3\sigma) < X < (1300+3\sigma) \leq OL$	$BL \leq (700-3\sigma) < X < (1300+3\sigma) \leq OL$	$BL \leq (500-3\sigma) < X < (1500+3\sigma) \leq OL$
Hg	$BL \leq (700-3\sigma) < X < (1300+3\sigma) \leq OL$	$BL \leq (700-3\sigma) < X < (1300+3\sigma) \leq OL$	$BL \leq (500-3\sigma) < X < (1500+3\sigma) \leq OL$
Br	$BL \leq (300-3\sigma) < X$	NA	$BL \leq (250-3\sigma) < X$
Cr	$BL \leq (700-3\sigma) < X$	$BL \leq (700-3\sigma) < X$	$BL \leq (500-3\sigma) < X$

Units and limits in EU RoHS Directive 2011/65/EU:

Element	Pb	Cd	Hg	Cr(VI)	PBBs(single)	PBDEs(single)
---------	----	----	----	--------	--------------	---------------

Test Report

Report No.: ZRC2210045XY-ROHS-R1

Date: Oct. 19, 2022

Page 5 of 12

Unit	mg/kg	mg/kg	mg/kg	mg/kg	mg/kg	mg/kg
Limit	1000	100	1000	1000	1000	1000

(2) ① mg/kg = ppm = 0.0001%, N.D. = Not Detected (Less than RL).

②Unit and RL (Report limit) in wet chemical test.

Element	Pb	Cd	Hg	Cr(VI)	PBBs(single)	PBDEs(single)
Unit	mg/kg	mg/kg	mg/kg	mg/kg	mg/kg	mg/kg
Limit	2	2	2	2	5	5

③According to IEC 62321-7-1:2015, result on Cr(VI) for metal sample is shown as Positive/Negative.

Negative = Absence of Cr(VI) coating, Positive = Presence of Cr(VI) coating.

Storage condition and production date of the tested sample are unavailable and thus results of Cr(VI) represent status of the sample at the time of testing.

④ According to IEC 62321-3-1:2013, this column represents the results of wet chem test.

(3) This column represents the exempted decoration of material or other related testing sample's information.

(2) Phthalates (DBP, BBP, DEHP, DIBP) content

Test Method: IEC 62321-8: 2017, analyzed by gas chromatographic-mass spectrometer (GC-MS).

Substances	DBP	BBP	DEHP	DIBP	Conclusion
CAS No.	84-74-2	85-68-7	117-81-7	84-69-5	
Limit (mg/kg)	1000	1000	1000	1000	
RL (mg/kg)	30	30	30	30	
Material No.	Result (mg/kg)				
1	N.D.	N.D.	N.D.	N.D.	PASS
2	N.D.	N.D.	N.D.	N.D.	PASS
7	N.D.	N.D.	N.D.	N.D.	PASS
8	N.D.	N.D.	N.D.	N.D.	PASS
9	N.D.	N.D.	N.D.	N.D.	PASS
10	N.D.	N.D.	N.D.	N.D.	PASS
11	N.D.	N.D.	N.D.	N.D.	PASS
12	N.D.	N.D.	N.D.	N.D.	PASS
13	N.D.	N.D.	N.D.	N.D.	PASS
14	N.D.	N.D.	N.D.	N.D.	PASS

Test Report

Report No.: ZRC2210045XY-ROHS-R1

Date: Oct. 19, 2022

Page 6 of 12

15	N.D.	N.D.	N.D.	N.D.	PASS
16	N.D.	N.D.	N.D.	N.D.	PASS
17	N.D.	N.D.	N.D.	N.D.	PASS
18	N.D.	N.D.	N.D.	N.D.	PASS

Note: 1. mg/kg = milligram per kilogram (ppm).

2. RL = report limit.

3. N.D.=not detected(less than RL).

Test Report

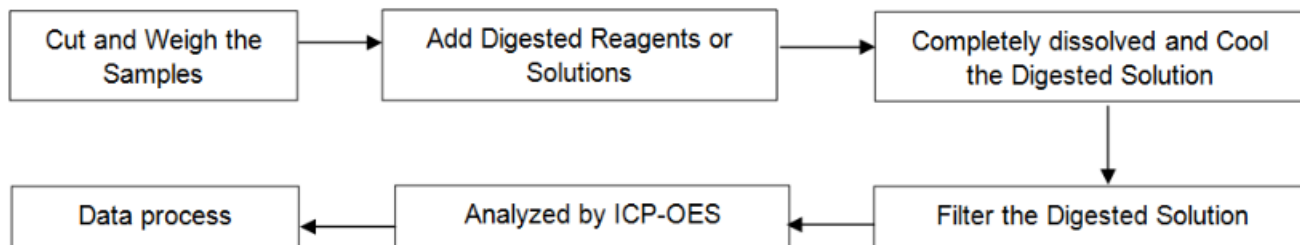
Report No.: ZRC2210045XY-ROHS-R1

Date: Oct. 19, 2022

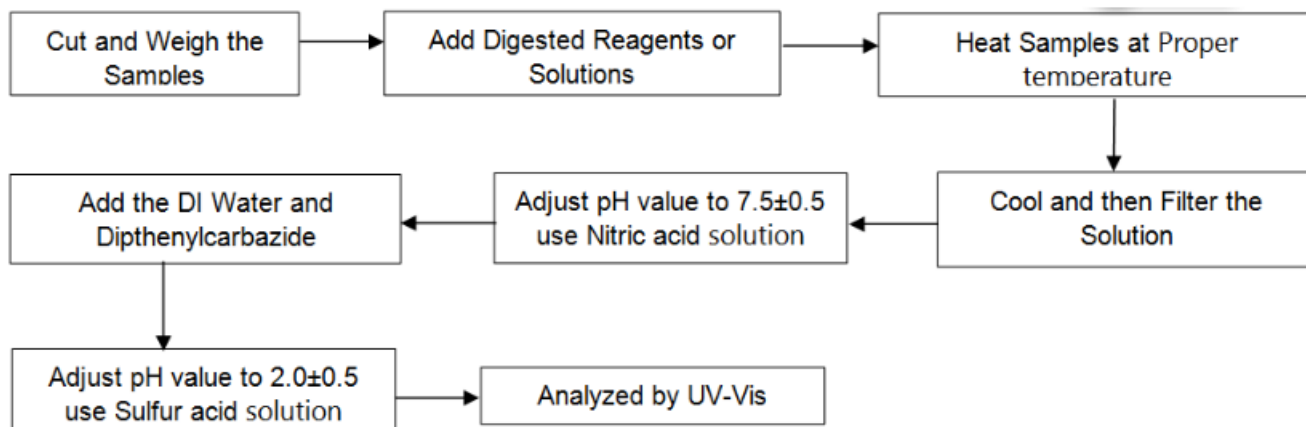
Page 7 of 12

Test Process Flow

1. Lead, Cadmium, Mercury



2. Hexavalent Chromium (Non-metal)



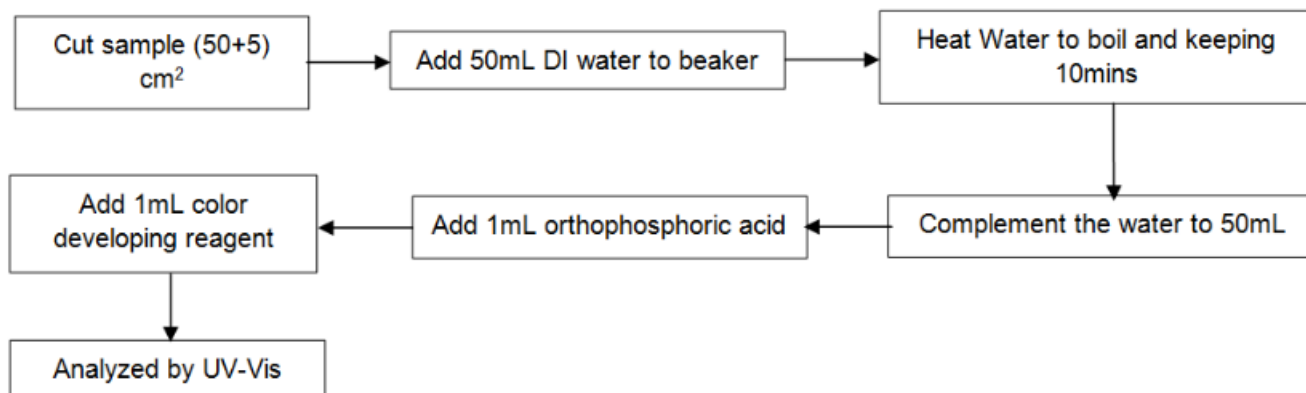
Test Report

Report No.: ZRC2210045XY-ROHS-R1

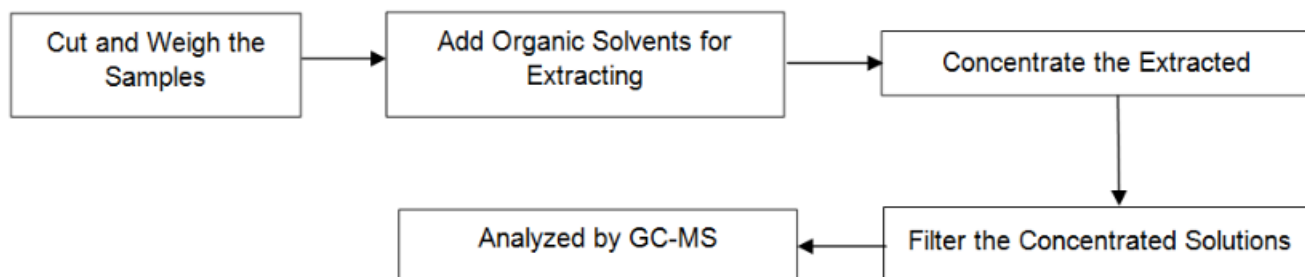
Date: Oct. 19, 2022

Page 8 of 12

Hexavalent Chromium (Metal)



3. PBBs & PBDEs, Phthalates



Test Report

Report No.: ZRC2210045XY-ROHS-R1

Date: Oct. 19, 2022

Page 9 of 12

Photo(s) of Sample:



Test Report

Report No.: ZRC2210045XY-ROHS-R1

Date: Oct. 19, 2022

Page 10 of 12



Test Report

Report No.: ZRC2210045XY-ROHS-R1

Date: Oct. 19, 2022

Page 11 of 12



Test Report

Report No.: ZRC2210045XY-ROHS-R1

Date: Oct. 19, 2022

Page 12 of 12



End of Report